

Graduate Student Resources Fair

- Boston & Western MA Campus Students
- Online Nutrition & Hybrid Nurse Educator Students
- All Library Science Students
- All PhD and Certificate Students

September 28th, 2023

- Behavior Analysis
- Children's Literature
- Gender and Cultural Studies
- Health Sciences: Nursing, Nutrition, Physical Therapy, Health Professions Education
- History
- Library and Information Science
- Public Policy
- Social Work
- Dual Degrees

Welcome



Health Promotion & Wellness

- Health Promotion & Wellness (also called the Health Center) at Simmons is located on the Residential Campus and is available to all Simmons students.
- Graduate students who are enrolled in the Student Health Insurance Plan can utilize the plan at our clinic with a \$15 copay. Graduate students with other insurance plans will be billed directly for services (\$35-50), and can request reimbursement from their insurance provider.
- Our staff includes physicians, nurse practitioners, registered nurses, and a registered dietitian.
- Services include urgent care for illness and injury, management of chronic illness, prescriptions, and referrals for specialty care.
- All full-time students under age 30 and all full- and part-time health science students of any age must submit documentation of required immunizations. You can find these requirements on the website.
- Contact us at 617-521-1020 to make an appointment.
- You can email questions to healthcenter@simmons.edu.

Visit [our webpage](#) for more detailed information

REEF Support Center – A place to go when you’re stuck

Location: Commuter Student/Dix Scholar Lounge A-075

REEF refers to **R**esilience, **E**fficacy, and **E**mpowerment through Foundational support services.

Our Resources

- Food Access
- Housing Access and Off Campus Living
- Commuter Student Resources
- SOS Emergency Fund
- Violence Prevention, Education, and Outreach Program
- Student Assistance Program (SAP)
 - Extended mental health support and referrals
 - Financial wellness, family and childcare resources, and more.

Contact Us: reef@simmons.edu to schedule a meeting!
Follow Us: [@simmonsreef](https://www.instagram.com/simmonsreef) on instagram



Mental Health and Life Resources

- **ComPsych** is available to graduate students
 - Confidential Emotional Support
 - Life Services (FamilySource)
 - Legal Guidance (LegalConnect)
 - Financial Guidance (Financial Connect)
 - Online Resources
- Available to students 24 hours/day, 7 days week for support
- Call: 800.272.7255 OR Visit our website at [SAP](#)
- **If you are experiencing a mental health emergency, call Public Safety if you are on campus or 911 if you are off campus.**

Military & Veteran Services

The Office of Military & Veteran Services assists students in navigating their Chapter 33, Chapter 35, Chapter 31, Tuition Assistance, and ROTC benefits, as well as provides programming to serve our student-veteran and military-affiliated population.

Even if you're not using any education benefits earned through yours or your family member's service, OMVS is here to serve you.

Connect with us for our newsletter and our **Virtual Veterans Lounge**, which is held the first **Monday** of every month from **7-9pm EST**, and is a place where you can connect with your peers from across the country.



We offer priority registration for all active-duty servicemembers, spouses of active-duty servicemembers, and for all veterans. Contact Stephen Pusateri for details about this or any other questions you may have:

stephen.pusateri@simmons.edu 617-521-2001

The Office of Military & Veteran Services also hosts **twice-weekly virtual Active Study Sessions** via Zoom. These are sessions where we focus on schoolwork and help one another stay on track with our studies.

Writing Center

The Writing Center offers one-on-one tutoring to strengthen students' academic writing skills.

Writing tutors are Simmons graduate students. They work with students in all programs and disciplines and on all aspects of writing, e.g. brainstorming, developing and organizing ideas, citing sources.

Please note: We are NOT a proofreading or editing service.

Graduate students have two options to access writing support:

1. Book a tutoring appointment. Go to the Writing Center's [online schedule](#).
2. Grad study group sign up : <https://forms.gle/m7AmoDr5FqteegneA>

Questions?

Please email JoJo Jacobson, Director of Academic Support and Accessibility: jacobsonj@simmons.edu

Library



Visit Us

simmons.edu/library or Lefavour Hall & MCB West Wing

- [Library Hours](#)
 - Monday-Friday 7:30am - 10:00pm
 - Saturday & Sunday 10:00am - 10:00pm
- 24-Hour Silent Study Room - tap in with Student ID
- Access ebooks and articles
- Course Reserves checkouts
- Interlibrary Loan pickups
- Variety of study spaces including Group Study Rooms

Follow Simmons University Library on [Facebook](#) and [simmonsunivlibrary](#) on [Instagram](#) for updates and fun

Get Support

Remotely or in person

- Make a Research [appointment](#)
- Explore Guides and [videos](#) to help with [research](#), [navigating Simmons](#), and more
- Chat service seven days a week
- University Library, library@simmons.edu
- University Archives, archives@simmons.edu

Meet with a Librarian: simmons.libguides.com/meet
Book a Group Study Room: simmons.libcal.com

Accessibility Services

The **Office of Accessibility Services** (OAS) is a service available to all Simmons students with documented diagnoses/disabilities. The OAS provides accommodations and services to registered students to provide equal access to learning and programming.

To register with OAS, students must self disclose and provide documentation of their diagnosis/ disability along with student testimony. OAS engages in an interactive process to determine appropriate accommodations which often includes an intake meeting with a member of the OAS staff. Please contact us with any questions.

See the OAS website (simmons.edu/access) for information about how to register with the OAS and request accommodations and support.

How to Contact the OAS:

By Email: access@simmons.edu

By Phone: (617) 521-2658

Student Financial Services (Financial Aid)

The Financial Aid office resides inside the “**One Stop Center for Enrollment Student Services**” located on the 2nd floor of the Main College Building.

Many graduate students will interact with us to:

- ★ Apply for loan funding
- ★ Request a book or parking voucher
- ★ Ask for a reduction or increase in loan funding.
- ★ Talk through loan repayment options
- ★ Help understand eligibility requirements

We would love to hear from you!

Email us at sfs@simmons.edu with questions or to schedule an appointment (in person, phone or zoom) with a financial aid counselor.

Call us at 617.521.2001 if you prefer speaking with our staff over the phone.

Browse our website simmons.edu/sfs/gr to complete forms or submit an appeal

Student Financial Services (Student Accounts)

The Student Accounts staff reside inside the new “**One Stop Center for Enrollment Student Services**” located on the 2nd floor of the Main College Building. We are here to help you with any questions regarding billing & payment.

Log in to your [Workday](#) account to:

- ★ Review your e-bill
- ★ Make a payment by e-check or credit card
- ★ Enroll in or manage a payment plan
- ★ Add an authorized user
- ★ Set up direct deposit for refunds
- ★ View your 1098-T tax documents

*Checks and cash are accepted at the Cashier's Window
M-F 9-4 PM.

We would love to hear from you!

Email us at sfs@simmons.edu with questions or to schedule an appointment.

Call us at 617.521.2001 if you prefer speaking with our staff over the phone.

Browse our website simmons.edu/sfs or frequently asked questions [page!](#)

Registrar's Office

The Office of the Registrar is where undergraduate and graduate students can go to get information about their enrollment, class schedules, academic records and credits, and graduation requirements.

Some Services We Provide:

- Change of Name and Address
- Enrollment Verification
- Registration
- Transcripts
- Transfer Credit

Office Registrar, 617-521-2111, (fax) 617-521-3144

<http://www.simmons.edu/academics/registrar/>

Email Accounts:

registrar@simmons.edu:

General questions, registration issues or questions, transcripts and verification requests, questions about requirements, Petitions to Graduate, and so much more!

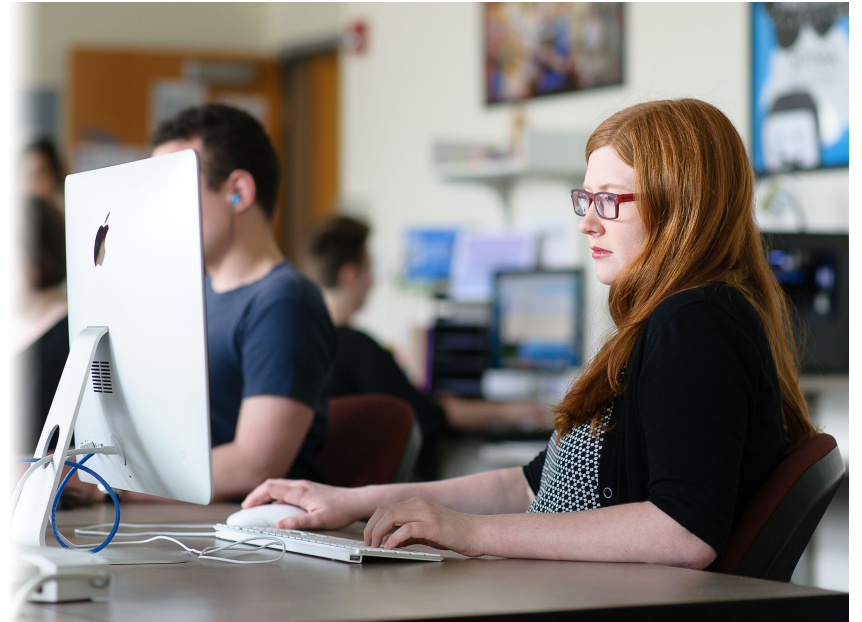
Technology

The **Technology Service Desk** has moved to the ground floor of the MCB, room A-050. Our services, including walk-up support and equipment loans, are available Monday through Friday, 8:00 am to 6:00 pm.

Our **Service Desk** also provides technical support via phone and email. We can help troubleshoot computer problems, account access, printing, Zoom, and many other technology-related issues.

Our website, <https://servicedesk.simmons.edu>, provides access to many resources including:

- contact information
- support hours
- FAQs
- service & support request forms
- technology discounts



Card Office

All Simmons University students can obtain their official Simmons ID Card from the Campus Card Office located on the second floor of the Main Campus Building in the Student [One-Stop](#).

Once you are registered at Simmons, your ID card is an important part of your Simmons experience.

- access buildings with the card
- pay for food in the cafeteria or campus coffee shop
- tap in to the parking garage (after setting up your parking account).

If you are in a [fully online program or Western MA Campus](#), please complete the online request form, and an ID card will be sent to you by mail.

All students can **submit their photo online** prior to coming to campus and have the ID ready for pick up when you arrive on campus.

To receive an ID card that reflects a first name other than your legal first name, visit the **Registrar's page** for instructions to update the first name in your student record.

There is no charge for your first Simmons Campus Card but if you need to replace a lost or stolen card, there is a \$20.00 replacement fee.

Office of Diversity Equity and Inclusion (ODEI)



We are excited about the launching of the Office of Diversity Equity and Inclusion (ODEI)!

The office of Diversity Equity and Inclusion is housed under the Student Engagement, Success and Diversity division and committed to transforming our community into one that: recognizes and celebrates diversity in all its forms; actively disrupts and challenges bias; and continuously seeks to achieve equity and inclusion for all .

- Coaching and support to student affinity groups,
- DEI workshops
- Collaborates with on and off-campus stakeholders on programs and events
- Develop and implement organization-wide DEI policies and practices.

Our vision is to create a legacy of equitable and inclusive leadership by challenging our community to stretch beyond their current understanding to embrace **discomfort, vulnerability, and to advance their understanding of intersectionality, critical thinking, personal accountability, empathy and compassion, and fostering community.**

WE'D LIKE TO HEAR FROM YOU!

For inquiries and partnerships

Email: diversity@simmons.edu

Email: Multicultural@simmons.edu

Thank You

If you have any questions or would like to get in contact with any of the offices from today's presentation please contact: SESD@Simmons.edu