

McGill's, Inc. Uniforms Unlimited 410 Chestnut Street, Manchester, NH 03101
Phone: 603-627-3472 Fax: 603-627-9639 Business Hours: Monday-Friday 9:00am-5:00pm

ATTENTION STUDENTS

Please use the information provided to mail, fax, or email your order form with payment. McGill's will also accept orders by phone. Enclosed is a sizing chart for your convenience. Please note sizing varies and leave enough room for movement and items in your pockets. Scrubs should be worn loose and not snug. Simmons recommends you order 2 tops and bottoms. Scrub tops and jackets will be embroidered with the Simmons University Nursing logo and are not eligible for return or exchange.

**ORDERS SHOULD BE RECEIVED IN OUR OFFICE
NO LATER THAN **July 15, 2020** TO ENSURE ONTIME
DELIVERY FOR FALL SEMESTER START.**

McGill's current business hours are: Monday-Friday 9:00am-4:00pm

Important Information

Regarding Returns and Exchanges

To protect the health and well-being of our staff and customers, we have suspended our standard return/exchange policy for the duration of the Covid-19 crisis. We are not currently accepting any items for return or exchange. We will re-evaluate this policy when more definitive information is available as to how long the virus survives on various fabrics and packaging. We appreciate your understanding.

Sincerely,

McGill's Inc.

Included in this packet:

Page 2 – Price List

Page 3 – Ordering Instructions

Page 4 – Order Form

Page 5 – Size Guide

**Page 6 – Littmann Stethoscope
Colors**

McGill's, Inc. Uniforms Unlimited 410 Chestnut Street, Manchester, NH 03101
Phone: 603-627-3472 **Fax:** 603-627-9639 **Business Hours:** Monday-Friday 9:00am-5:00pm

Simmons University -BSN and MSN Programs Uniform and Accessory Price List

Prices effective as of 4-1-20. Prices are subject to change without notice.

| Item Description | Price Each |
|------------------|------------|
|------------------|------------|

Woman's Items:

| | |
|---------------------------------------|-------|
| White scrub jacket w/ logo embroidery | 28.00 |
| Navy scrub top w/ logo embroidery | 22.75 |
| Navy elastic waist scrub pant | 16.75 |
| Navy drawstring scrub pant | 15.75 |

Man's Items:

| | |
|--------------------------------------|-------|
| White scrub jacket w/logo embroidery | 28.00 |
| Navy scrub top w/ logo embroidery | 20.75 |
| Navy drawstring scrub pant | 15.75 |

NOTE: Jackets and Scrub tops CANNOT be returned or exchanged.

Accessories:

| | |
|--|--------|
| Name pin- 3 line w/ logo <i>*Required*</i> | 7.50 |
| Littmann Classic III stethoscope standard colors | 99.00 |
| Littmann Classic III stethoscope special edition colors | 109.00 |
| Littmann Cardiology IV stethoscope standard colors | 177.00 |
| Littmann Cardiology IV stethoscope special edition colors | 192.00 |

Note: Optional engraving of chest piece is available for an extra \$10.

Up to 20 characters, Engraved in uppercase block lettering. All engraved stethoscopes are final sale.

| | |
|---|-------------|
| Bandage scissors | 5.25 |
| Penlight-replaceable battery model | 5.75 |
| Nursing Shoes | 55.00-99.00 |
| Shipping/handling per order via UPS or USPS Priority Mail | 13.95 |

Shipping/Payment:

- McGill's accepts cash, personal checks, money orders, MasterCard, Visa, or Discover.
- Orders paid by personal check are not eligible for shipment for two weeks from our receipt of your check. There is a \$25.00 fee on any check returned to us by the bank.
- **Orders can be placed by mail, phone, or email.**

- We do not process unpaid orders. We work with state/federal agencies and other third-party payers sponsoring students. Financial aid is not considered a 3rd party payer.
- Orders are shipped via UPS or USPS. Addresses must be complete and correct. Failure to include any apartment, floor, or suite number, where applicable, may delay delivery.

McGill's, Inc. Uniforms Unlimited 410 Chestnut Street, Manchester, NH 03101
Phone: 603-627-3472 Fax: 603-627-9639 Business Hours: Monday-Friday 9:00am-5:00pm

Please read the instructions below before filling out the order form.

1. Clearly **PRINT** or **TYPE** your name on the name line.
 Your name pin will be spelled as you provide it to McGill's.
2. Please provide the best phone number in case McGill's needs to contact you.
3. If you provide us with a valid email address, we will send you a shipment notification when your package is ready to ship.
4. **Provide a complete shipping address.** If your address is missing any relevant data such as apartment #, unit #, zip code, etc., your package may be returned to us. You may then be responsible to repay the shipping costs. Orders are shipped via UPS or Priority Mail.
5. Select a size from the drop-down menu with your requested size for each item you wish to purchase. One item per line as shown in the sample form. **Petites and tall are 2-3 inches different from the regular length and only changes the length, not the fit.**
6. **Select the dollar amount for each item you wish to purchase.** One item per line as shown in the sample form. If you wish to purchase 2 tops and 2 bottoms, you must select the size and amount for both. There are three lines for tops and pants if you wish to purchase more than one or two sets.
7. If you wish to purchase a stethoscope, or additional items, use the drop-down menus or blank lines to add.
8. We also offer optional stethoscope engraving, available for the Littmann Classic III and Cardiology IV. We can engrave up to 20 characters (letters + spaces), in uppercase letters, on the stethoscope chest piece. If you choose to add the engraving option, please clearly print or type the text to be engraved in the specified box as shown.
9. Please add up your order and fill in the subtotal, and total boxes.

This is just an example. Colors or pricing may be different from your program requirements.

| | | | |
|---------------------|-----------------|------------------|-------|
| Name | 123 Anywhere St | Shipping Address | |
| 000 000 0000 | Apt 2 | Apt or Unit # | 4 |
| janedoe@noemail.com | Any city | NH | 00000 |
| | City | State | Zip |

| Item Description | Image | Size | Amount |
|---|-------|--------|---------|
| White Unisex Scrub Jacket W/Simmons University logo embroidery | | | |
| Navy Ladies' Scrub Top W/ Simmons University logo embroidery | | Medium | \$22.75 |
| Navy Unisex/Men's Scrub Top W/ Simmons University logo embroidery | | 5 | 6 |
| Navy Ladies' Elastic Waist Scrub Pant Full Elastic Waist | | M REG | \$16.75 |
| Navy Unisex | | | |

See below for available options for placing your order.

Option 1: Mail or fax your completed order form with payment (credit card, check or money order) to:
Mailing Address: McGill's Inc. 410 Chestnut Street
 Manchester, NH 03101
Fax: 603-627-9639

Option 2: You may also phone in your order to us, credit card payment only for phone orders:
 603-627-3472

Option 3: Email your completed order form with credit card payment to:
ordermcgills@hotmail.com

We accept credit card (MC, Visa, Discover, and Amex), personal check, and money order. Checks and money orders must be made payable to McGill's Inc.

| | |
|---|------------------------------------|
| Name Pin | \$7.50 |
| Name Pin | \$7.50 |
| Bandage Scissors | |
| Penlight | |
| Littmann stethoscope options shown below | |
| Standard Finish Classic III | |
| Special Edition Color/Finish Classic III | Turquoise/Smoke/Pink stem \$109.00 |
| Standard Finish Cardiology IV | |
| Special Edition Color/Finish Cardiology IV | |
| Stethoscope Engraving | Optional \$10.00 |
| Jane Doe | 8 |
| SubTotal | \$213.00 |
| Shipping/Handling | \$13.95 |
| Total | \$226.95 |

Add text to be engraved in the box above, if you choose the optional engraving.

McGill's, Inc. Uniforms Unlimited 410 Chestnut Street, Manchester, NH 03101
Phone: 603-627-3472 Fax: 603-627-9639 Business Hours: Monday-Friday 9:00am-5:00pm

**Navy Ladies' Two
Pocket Scrub Top
W/Simmons
University
Embroidered Logo**
 Sizes: XXS-5X



| | XXS | XS | S | M | L | XL | 2X | 3X | 4X | 5X |
|-------------------|-------------------|--------------------|--------------------|-------------------|-------|-------|-------|-------|-------|-------|
| Size | 0 | 2-4 | 6-8 | 10-12 | 14-16 | 18-20 | 22-24 | 26-28 | 30-32 | 34-36 |
| Chest/Bust | 31 | 33-34 | 35-37 | 38-40 | 41-44 | 45-48 | 49-52 | 53-56 | 57-60 | 61-64 |
| Waist | 22-23 | 25-26 | 27-29 | 30-32 | 33-36 | 37-40 | 41-44 | 45-48 | 49-52 | 53-57 |
| Hip | 32 1/2- 33 1/2 | 34 1/2 - 35 1/2 | 36 1/2 - 37 1/2 | 39 1/2- 40 1/2 | 42-44 | 46-48 | 50-52 | 54-56 | 58-60 | 62-64 |

**Navy Ladies' Elastic
Waist Cargo Pant**
Full Elastic waist
 Sizes: XXS-5X Reg
 XS-3X Petite
 S-XL Tall



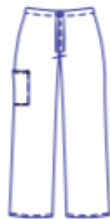
| | XXS | XS | S | M | L | XL | 2X | 3X | 4X | 5X |
|-------------------|-------------------|--------------------|--------------------|-------------------|-------|-------|-------|-------|-------|-------|
| Size | 0 | 2-4 | 6-8 | 10-12 | 14-16 | 18-20 | 22-24 | 26-28 | 30-32 | 34-36 |
| Chest/Bust | 31 | 33-34 | 35-37 | 38-40 | 41-44 | 45-48 | 49-52 | 53-56 | 57-60 | 61-64 |
| Waist | 22-23 | 25-26 | 27-29 | 30-32 | 33-36 | 37-40 | 41-44 | 45-48 | 49-52 | 53-57 |
| Hip | 32 1/2- 33 1/2 | 34 1/2 - 35 1/2 | 36 1/2 - 37 1/2 | 39 1/2- 40 1/2 | 42-44 | 46-48 | 50-52 | 54-56 | 58-60 | 62-64 |

**Navy Unisex Scrub
Top W/Simmons
University
Embroidered Logo**
 Sizes: XS-5X



| Unisex Size Chart | XXS | XS | S | M | L | XL | 2X | 3X | 4X | 5X |
|-------------------|-------------|-------------|--------------|---------------|---------------|-------|-------------|-------------|-------------|-------------|
| Men's | 26-28 | 30-32 | 34-36 | 38-40 | 42-44 | 46-48 | 50-52 | 54-56 | 58-60 | 62-64 |
| Ladies' | Size 0-2 | Size 4-6 | Size 8-10 | Size 12-14 | Size 16-18 | 20W | 22W- 24W | 26W- 28W | 30W- 32W | 34W- 36W |

Navy Unisex Pant
*Full Drawstring
Waist Pant*
 Sizes: XXS-5X Reg
 XS-3X Short
 XS-2X Tall



| Unisex Size Chart | XXS | XS | S | M | L | XL | 2X | 3X | 4X | 5X |
|-------------------|-------------|-------------|--------------|---------------|---------------|-------|-------------|-------------|-------------|-------------|
| Men's | 26-28 | 30-32 | 34-36 | 38-40 | 42-44 | 46-48 | 50-52 | 54-56 | 58-60 | 62-64 |
| Ladies' | Size 0-2 | Size 4-6 | Size 8-10 | Size 12-14 | Size 16-18 | 20W | 22W- 24W | 26W- 28W | 30W- 32W | 34W- 36W |

**White Unisex
Scrub Jacket
W/Simmons
University
Embroidered Logo**
 Sizes: XXS-5X



| Jacket Size Chart | XXS | XS | S | M | L | XL | 2X | 3X | 4X | 5X |
|-------------------|-------|-------|-------|-------|-------|-------|-------|-------|-------|-------|
| Chest/Bust | 31-32 | 33-34 | 35-37 | 38-40 | 41-44 | 45-48 | 49-52 | 53-56 | 57-60 | 61-64 |
| Waist | 23-24 | 25-26 | 27-29 | 30-32 | 33-36 | 37-40 | 41-44 | 45-48 | 49-52 | 53-57 |
| Hip | 32-33 | 34-35 | 36-38 | 39-41 | 42-45 | 46-49 | 50-53 | 54-57 | 58-61 | 62-65 |

McGill's, Inc. Uniforms Unlimited 410 Chestnut Street, Manchester, NH 03101
Phone: 603-627-3472 Fax: 603-627-9639 Business Hours: Monday-Friday 9:00am-5:00pm

Available colors:
Littmann Classic III 27"
Standard Stainless-Steel Finish



Littmann Classic III
Available Special Edition Colors

Smoke Finish Chestpiece:

- Raspberry (with Black Stem & Headset)
- Black
- Dark Olive Green
- Turquoise (with Pink Stem),
- Lime Green (with Blue Stem),
- Gray (with Violet Stem)

Rainbow Finish Chestpiece:

- Raspberry
- Caribbean Blue
- Black (with Black Stem & Headset)

Mirror Finish Chestpiece:

- Raspberry (with Smoke Stem & Headset)
- Navy Blue (with Smoke Stem & Headset)
- Caribbean Blue (with Orange Stem)
- Plum (with Pink Stem, Smoke Headset)
- Ceil Blue (with Smoke Stem & Headset)
- Pearl Pink (with Pink Stem, Smoke Headset)

Copper Finish Chestpiece: Chocolate

Champagne Finish Chestpiece:

- Black (with Smoke Stem)
- Burgundy (with Smoke Stem)

Black Matte Finish Chestpiece:

- Burgundy (with Black Stem & Headset)
- Black

Examples of the different finishes for the Littmann Classic III



Available colors:
Littmann Cardiology IV 27"
Standard Stainless-Steel Finish



Littmann Cardiology IV
Available Special Edition Colors

Smoke Finish Chestpiece:

- Black (with Black Stem & Headset)
- Gray (with Smoke Stem & Headset)
- Caribbean Blue (with Mirror Stem & Smoke Headset)
- Plum (with Smoke Stem & Headset)
- Turquoise (with Smoke Stem & Headset)
- Black (with Smoke Stem & Headset)
- Black (with Champagne Stem & Black Headset)
- Navy (with Blue Stem & Black Headset)

Rainbow Finish Chestpiece:

- Raspberry (with Smoke Stem & Headset)
- Navy Blue (with Black Stem & Headset)
- Black (with Smoke Stem & Headset)
- Black (with Black Stem & Headset)
- Plum (with Purple Stem & Black Headset)

Mirror Finish Chestpiece:

- Burgundy (with Mirror Stem & Standard Headset)
- Black (with Mirror Stem & Standard Headset)

Brass Finish Chestpiece: Black (with Black Stem and Headset)

Champagne Finish Chestpiece:

- Black (with Smoke Stem & Headset)
- Caribbean Blue (with Champagne Stem & Black Headset)
- Burgundy (with Champagne Stem & Black Headset)
- Hunter Green (with Orange Stem & Champagne Headset)

Black Matte Finish Chestpiece:

- Black (with Black Stem & Headset)
- Black (with Red Stem & Black Headset)
- Black (with Blue Stem & Black Headset)
- Black (with Purple Stem and & Black Headset)
- Navy Blue (with Black Stem & Headset)

Examples of the different finishes for the Littmann Cardiology IV

