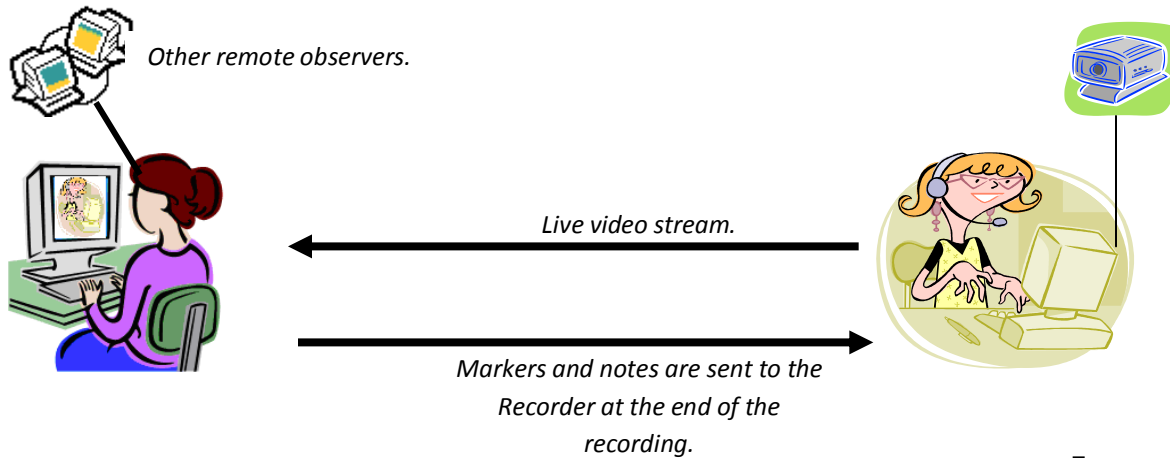


## How to Use Morae

Morae consists of three components: Morae Recorder, Morae Observer, and Morae Manager. This handout will give a quick introduction to these pieces and on how to use them.



**Morae Observer:** Allows multiple remote Observers but only one Observer can be the task logger.

**Morae Recorder:** Records the test session and streams the video to the Observer(s).

**Morae Manager:** Use for analyzing data, creating video clips and presentations.

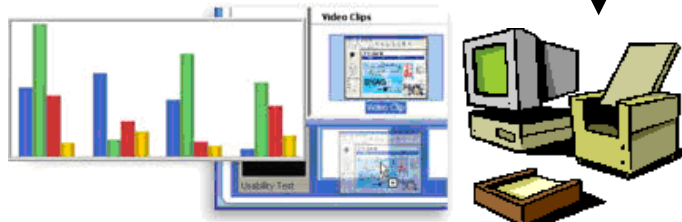


Figure 1. Morae software.

**Morae Recorder** is the software that resides on the system on which the users would perform the tests. Once started, the recorder runs in the background to record onscreen activities as well as video feed of the connected camera. If an Observer is used at the same time, the Recorder will transmit the video and screen image to the Observer for remote viewing.

**Morae Observer** is an optional piece that can be used to monitor and take notes of the test session. It can also remotely start or stop a recording session. Multiple copies of Observers can be used during a session. All of the Observers can log markers and marker related information, but only one can be designated as the task logger to take charge of the task logging. Once the session ends, the notes will be sent to the Recorder and be incorporated into the recordings.

**Morae Manager** is the software used to view, edit and analyze the recordings from the Recorder. The Manager can be used to produce graphs, video clips, and PowerPoint presentations of the test. Multiple recordings can

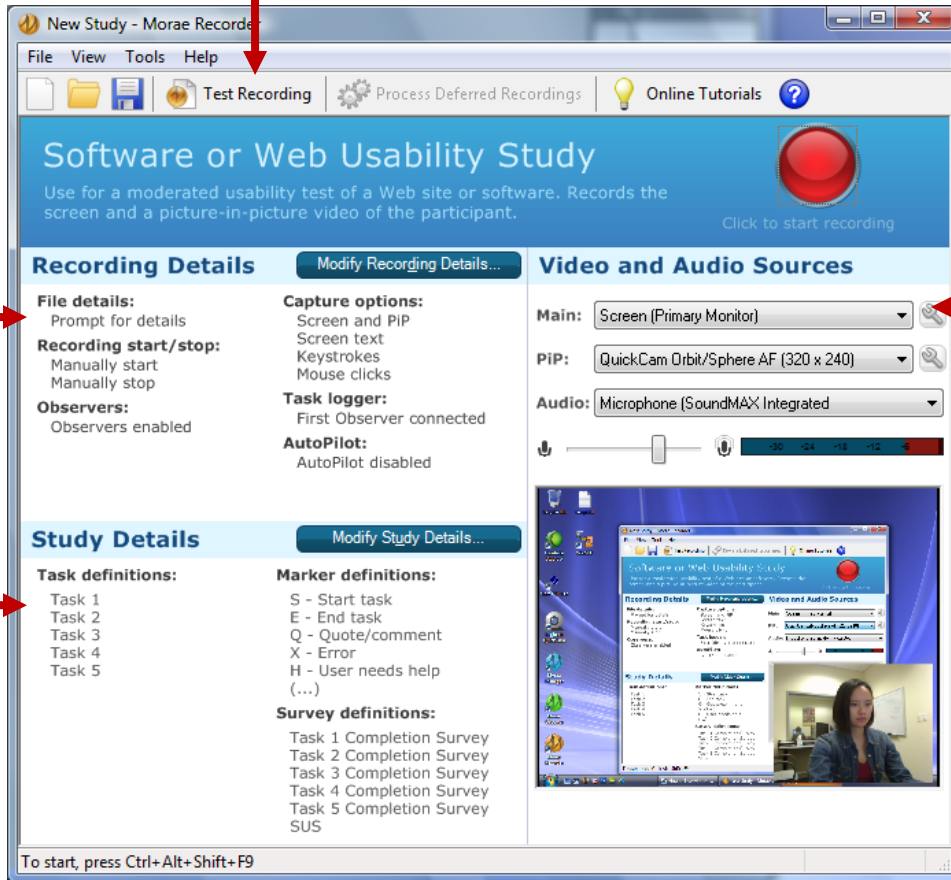
be imported into one project so the data can be aggregated. The Manager does not come into play until the recordings are completed.

## Procedures for Conducting a Test

### BEFORE THE TEST:

1. Turn on the user testing PC, and start Morae **Recorder**.
  - a. Create a new study configuration by first choosing the format of your test, or select an existing study configuration (you can edit it later on through the Modify Study Details button).
  - b. Check the Recording Details and Machine Settings to make sure everything is set as your test requires.

Perform a 15-second test recording.



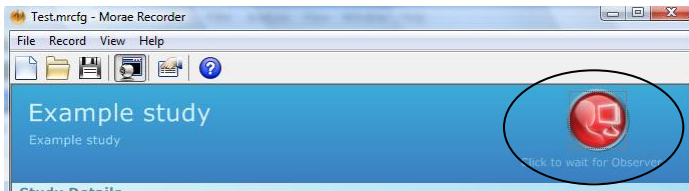
Edit file saving info, such as file name and saving location; select capture options, and define how Recorder is started and stopped.

Modify study details such as task and marker definitions, and create surveys.

Select primary source of recording and wall paper removal while recording preference.

- c. Do a test recording .

- d. Click the red button on the **Recorder** to put it into wait mode for the recording to start.



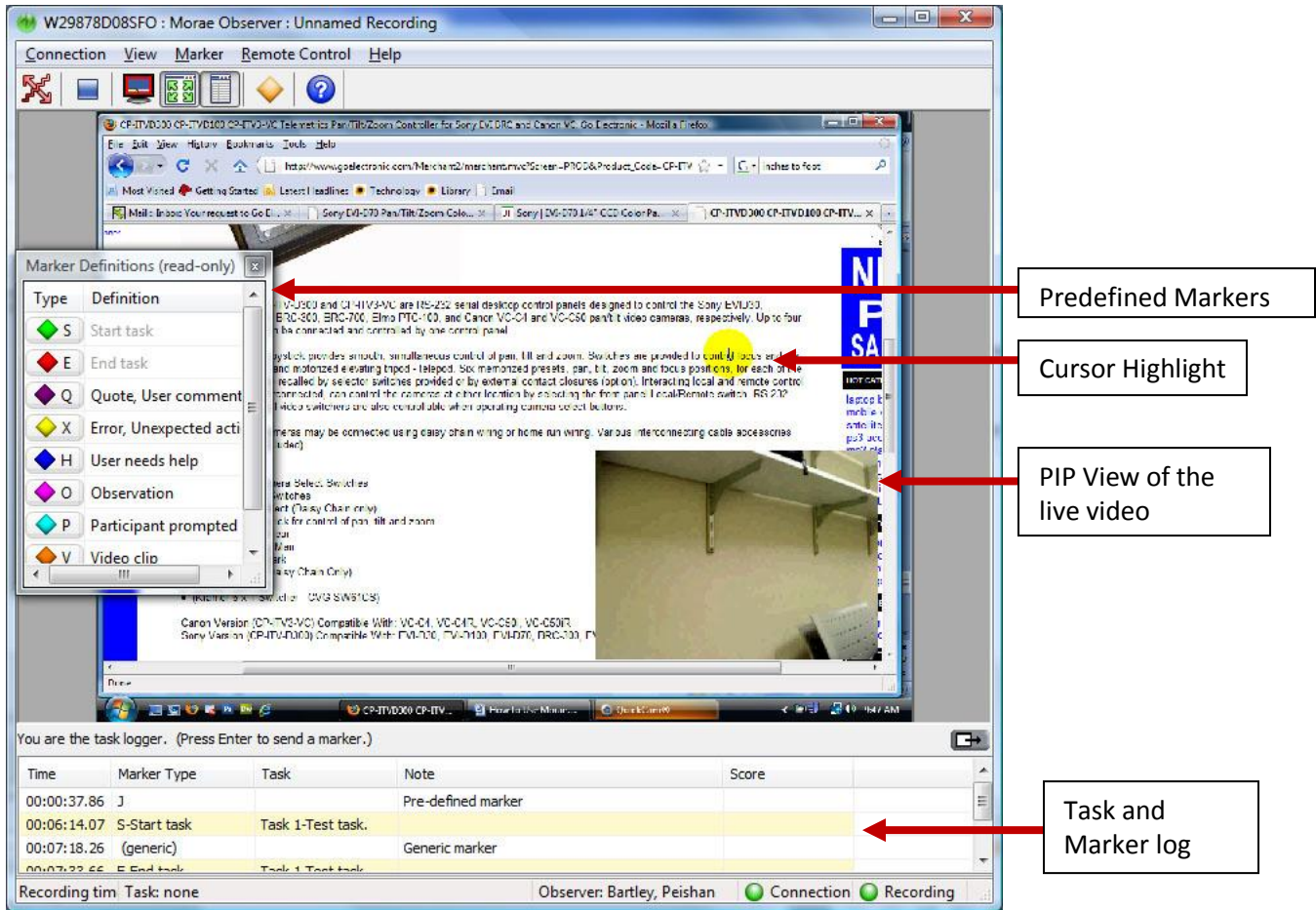
- 2. Turn on the PC that would be used by the test monitor. Start Morae **Observer**.
  - a. Connect the **Observer** to the Recorder by typing in the IP of the Recorder PC or finding it on the network through browse.
  - b. If you want to save it to a media file that can be viewed immediately from other machines, make sure to check the option that will save the recordings as an .WMV file in the Recording Details. The notes taken will be saved separately as a .txt file. The files will be saved on the Observer PC station.

The 'Connect to Recorder' dialog box contains the following elements:

- Connection section:**
  - Recorder computer name or IP address: A dropdown menu showing 'W/29876D08SFO' and a 'Browse Network...' button. A callout box points to this area with the text: "Find or type in the IP address of the Recorder PC."
  - Connection port: 5555 and a 'Change Port...' button.
  - Observer name: A text field containing 'GSLIS Usability Lab 2'. A callout box points to this field with the text: "Type in the observer's name."
- Observer session options section:**
  - Mute Audio. Note: Audio is still recorded in the WMV.
  - Save Session as WMV. Save WMV to: ... \EBSCOHostSession1 (1).wmv. A 'Save As...' button is next to the file path.
  - Experiencing a video delay?** Click Mute Audio for realtime video playback. A callout box points to this section with the text: "Select how the session would be observed. It is recommended that you mute the audio streaming as it will cause delay in the real time video streaming. The audio will still be recorded in the video file if you choose to save the session as a WMV file."
- Footer:**
  - New to Morae? Been away awhile? [Watch the quick Observer overview video.](#)
  - Buttons: Connect, Cancel, Help.

- 3. Start the recording on the Observer. The recording tool bar will be minimized and hidden on the Recorder. The recording should now be streaming live to the Observer.

- View the session and take notes by logging tasks, using predefined markers, or create generic markers on the **Observer**. The markers can be added to the note area either by selecting them from the Marker Menu or using the hotkey: CTRL + The letter representing the marker.



- When a session is completed, stop the recording according to your setup. The Observers may be given time to add additional notes, after which, the **Recorder** will grab the notes taken on the Observer and integrate them into one file with the recording. The recording is processed and saved as an .rdg file that can only be opened by Morae Manager.
- At the end of each session, you should have a .rdg file on the Recorder machine, and a .wmv file (if you chose to save a copy of it) and a .txt file (the text log of the session) on the Observer machine.
- Open the recording on **Manager**.
- You can now import your recordings into a project, and analyze the recordings along with the notes through the Manger's Analyze and Graph features. You can produce clips of the recordings and create an AVI or PowerPoint presentations using the Present feature.